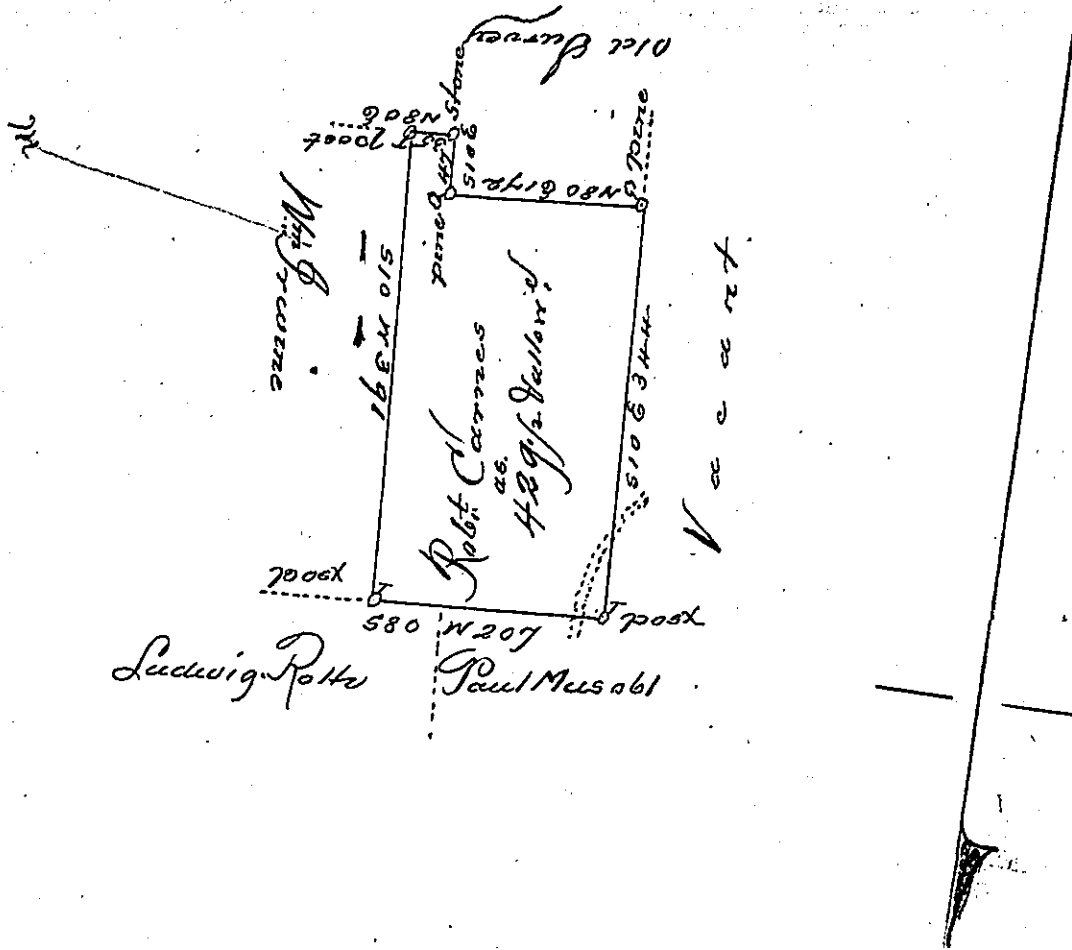


Hazle Luzerne



Draft of a tract of land called Situate on the Road leading from Berwick to Philadelphia in the County of Northum. Containing five hundred and twenty nine acres & 21/2 Gallons Surveyed for Robt Carnes the 26th day of Sept. 1793 by Virtue of a warrant dated the 13th day of JUNE 1793

by Wm Gray, Del.
Daniel Brodhead Capt.
Surr. Genl.

IN TESTIMONY that the above is a copy of the original remaining on file in the Department of Internal Affairs of Pennsylvania, made conformably to an Act of Assembly approved the 16th day of February, 1833, I have hereunto set my Hand and caused the Seal of said Department to be affixed at Harrisburg, this twenty fifth day of March, 1911

James D. Brown
 Secretary of Internal Affairs.